

HemoCue® PDS Configuration Tool

Operating Manual



HemoCue PDS Configuration Tool

Preface

This manual provides information on how to install and use the HemoCue PDS Configuration Tool.

Disclaimer

Do not: modify, translate, reverse engineer, decompile or create derivative works based on the HemoCue PDS Configuration Tool.

IPR - Intellectual Property Rights

Copyright

© 2019 HemoCue AB

Trademarks

HemoCue® PDS Configuration Tool, HemoCue® 201 DM Primary Docking Station.

Purpose

The PDS Configuration Tool is provided by HemoCue for configuration of IP address settings in primary docking stations. The tool is downloadable in a zip file via the web.

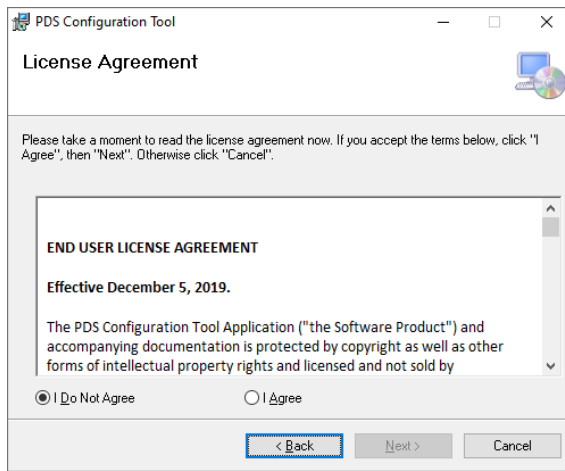
System Requirements

Windows 10 (64-bit versions). Internet connection needed if the necessary version of .NET not installed on the PC.

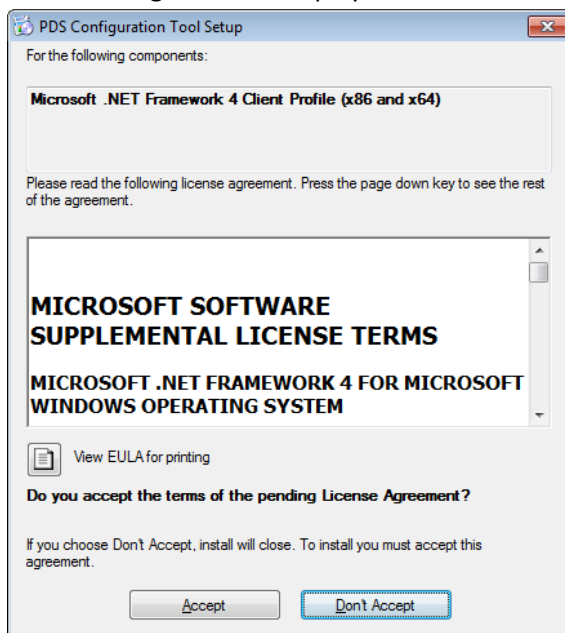
Installation

1. Make sure you are logged in as a local administrator on the computer where you intend to install the software.
2. Extract the zip file to a known location.
3. Open the location where the zip file was extracted.
4. Extract the zip file containing the setup files to a known location.
5. Double-click the setup file.

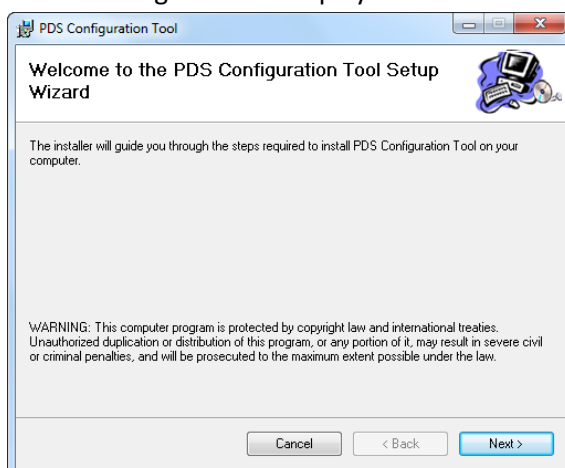
6. Read the EULA and click “I Agree” to continue.



7. If the required version of Microsoft .NET framework is not installed the following screen is displayed:

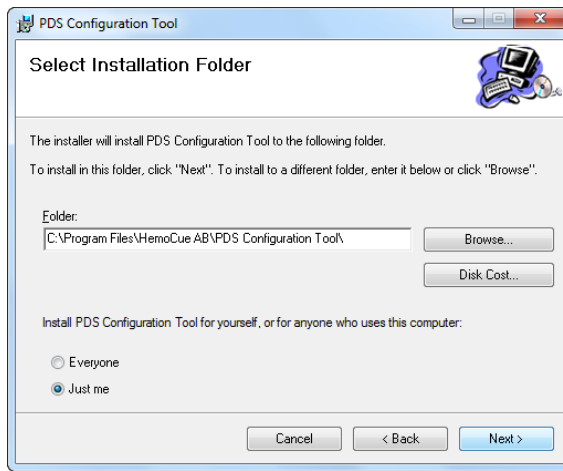


8. Press Accept to continue.
9. The following screen is displayed:



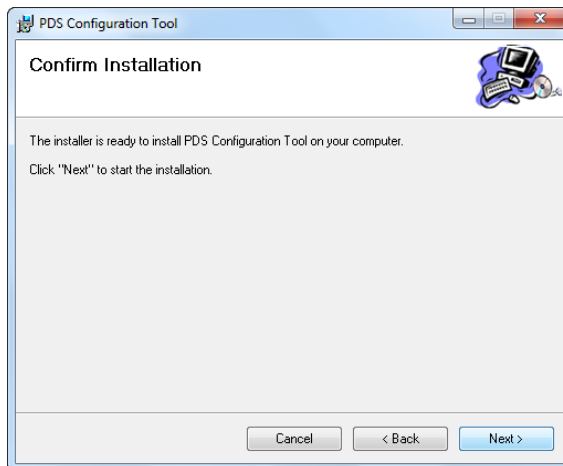
10. Press Next to continue.

11. The following screen is displayed:



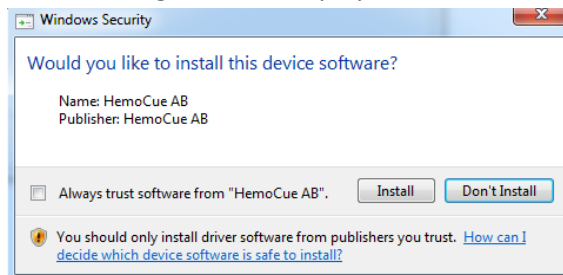
12. Select installation folder and whether to install the software for everyone or just you. Press Next to continue.

13. The following screen is displayed:



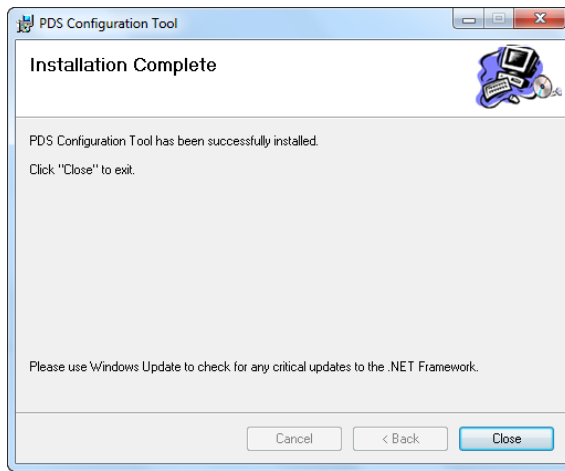
14. Press next to install the software.

15. The following screen is displayed:



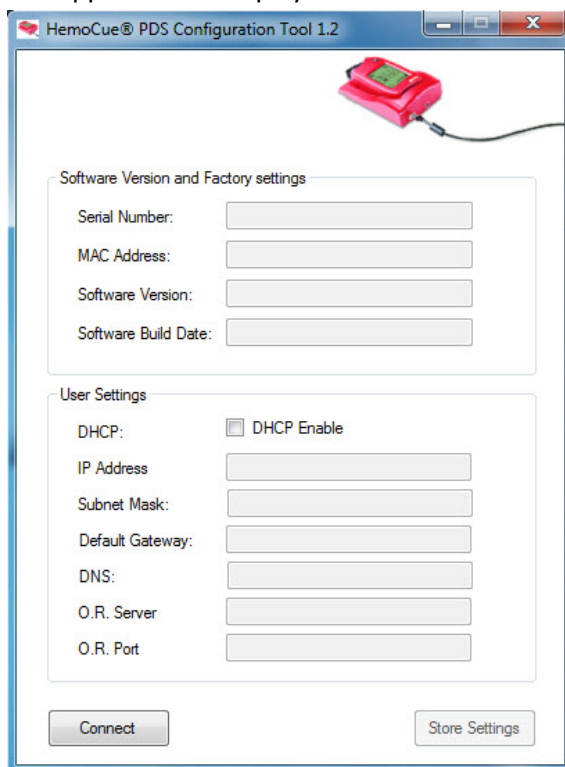
16. Press Install.

17. When the installation is complete the following screen is displayed:



Using the PDS Configuration Tool

1. Start the PDS Configuration Tool by clicking PDS Configuration Tool on the Start menu.
2. The application is displayed:



3. Connect a Primary Docking Station to the computer using a USB cable.
4. The first time a docking station is connected after installation, the driver is configured and the following screen is displayed:



- When pressing the Connect button the current configuration of the connected docking station is displayed:

HemoCue® PDS Configuration Tool 1.2

Software Version and Factory settings

Serial Number: 1735504009

MAC Address: 00-0A-91-00-36-DB

Software Version: 2.0.23

Software Build Date: Jul 13 2017

User Settings

DHCP: ☒ DHCP Enable

IP Address: 192.168.0.52

Subnet Mask: 255.255.255.0

Default Gateway: 192.168.0.1

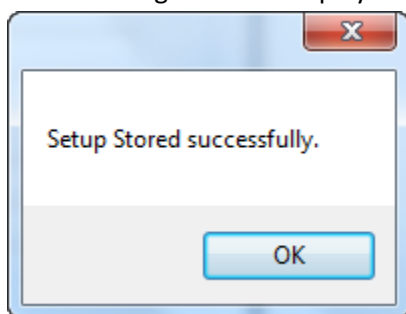
DNS: 0.0.0.0

O.R. Server: 192.168.0.50

O.R. Port: 5003

Connect Store Settings

- Change the User Settings as appropriate and press Store Settings.
- The following screen is displayed:






- Press OK to continue.
- The new configuration is now stored and the docking station can be disconnected.

Troubleshooting

In rare cases timing issues with the USB driver have been observed. If any error messages are shown: disconnect the docking station, restart the software and reconnect the docking station.



 HemoCue AB | Kuvettgatan 1 | SE-262 71 Ängelholm | Sweden
 +46 77 570 02 10 |  +46 77 570 02 12 | hemocue.com | info@hemocue.se